



*Image for illustrative purpose only*

## Summary

[Request a quote](#)

[Catalog](#)

Nb of contacts Fluidic	1
Gender	Standard
Socket / Receptacle	Socket / Receptacle - Fixed Panel Front Mounted
Locking system	Push-pull
Size	1P
Suggested matching part	<a href="#">PAG.A0.1GZ.ZC39G</a>
Series	REDEL P - Push-Pull

[https://www.lemo.com/int\\_en/solutions/redel/redel-p-push-pull/plg-a0-1gz-zg.html](https://www.lemo.com/int_en/solutions/redel/redel-p-push-pull/plg-a0-1gz-zg.html)

LEMO products and services are provided "as is". LEMO makes no warranties or representations with regard to LEMO product & services or use of them, express, implied or statutory, including for accuracy, completeness, or security. The user is fully responsible for his products and applications using LEMO components.

# Technical details

## Electrical Configuration

Nb of contacts Fluidic	1
Insert configuration value	1P.A01 - 1 Fluidic contact
Gender	Standard

## Form & Material

Shell style / Model id	PL - Fixed receptacle, nut fixing, fluidic contact
Socket / Receptacle	Fixed Panel Front Mounted
Housing material	PSU (Polysulfone), grey
Locking system	Push-pull
Keying	G: 1 key (alpha=0, plug: male contacts, receptacle: female contacts)
Colour	Grey
Variant	Grey front nut
Weight	6.69 g

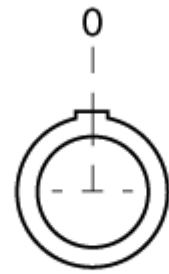
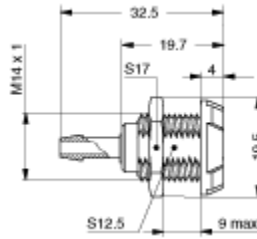
## Environment

Technical domain	Energy and Industrial, Medical, Test and Measurement, Transportation, Aerospace and UAV
Environmental sealing (IP rating)	IP50
Endurance	> 5000 mating cycles
Temperature range	-50°C / +150°C
Pressure	2 bars
Steam sterilization	Fully sterilizable (Steam, Gamma, ETO) following our protocols and tests in line with ISO 11134 and IEC 60601-1 standards. For more details on sterilization methods and cycles, please contact us.

# Drawings

[https://www.lemo.com/int\\_en/solutions/redel/redel-p-push-pull/plg-a0-1gz-zg.html](https://www.lemo.com/int_en/solutions/redel/redel-p-push-pull/plg-a0-1gz-zg.html)

LEMO products and services are provided "as is". LEMO makes no warranties or representations with regard to LEMO product & services or use of them, express, implied or statutory, including for accuracy, completeness, or security. The user is fully responsible for his products and applications using LEMO components.



## Dimensions

	A	L	N
mm.	19.5	32.5	19.7
in.	0.77	1.28	0.78

## Recommended By Lemo

### Accessories

Compatible cap	<a href="#">PBG.200.BMV</a>
----------------	-----------------------------

### Tools

Spanner	<a href="#">DCA.91.231.7TN</a>
---------	--------------------------------

[https://www.lemo.com/int\\_en/solutions/redel/redel-p-push-pull/plg-a0-1gz-zg.html](https://www.lemo.com/int_en/solutions/redel/redel-p-push-pull/plg-a0-1gz-zg.html)

LEMO products and services are provided “as is”. LEMO makes no warranties or representations with regard to LEMO product & services or use of them, express, implied or statutory, including for accuracy, completeness, or security. The user is fully responsible for his products and applications using LEMO components.