



Image for illustrative purpose only

Summary

[Request a quote](#)

[Catalog](#)

Number of contacts Low Voltage	12
Wire Size/AWG	30 - 22
Gender	Standard
Socket / Receptacle	Socket / Receptacle - Free
Locking system	Push-pull
Jacket cable outside diameter [mm]	5.30 - 14.00 mm
Size	2F
Series	F - Rugged Push-Pull

https://www.lemo.com/int_en/solutions/optima/f-rugged-push-pull/phn-2f-312-xlz.html

LEMO products and services are provided "as is". LEMO makes no warranties or representations with regard to LEMO product & services or use of them, express, implied or statutory, including for accuracy, completeness, or security. The user is fully responsible for his products and applications using LEMO components.

Technical details

Electrical Configuration

Insert configuration value	2F.312 - 12 Low Voltage
Insulator	L: PEEK (UL 94 / V-0/1.5)
Rated current	7 A
Contact Type	No contact(s)
Contact Dia.	0.7
Number of contacts Low Voltage	12
Wire Size/AWG	30 - 22
Gender	Standard

Form & Material

Shell style / Model id	PH - Straight receptacle
Socket / Receptacle	Free
Housing material	Aluminium (nickel plated [SAE AMS QQ N 290], anthracite color) shell and nut, other pieces bronze/brass
Locking system	Push-pull
Keying	3 keys (beta=165, gamma=30, plug: male contacts, receptacle: female contacts)
Colour	Grey
Weight	7.4 g

Environment

Technical domain	Motorsport, Security and Defence
Environmental sealing (IP rating)	IP67
Endurance	1000 mating cycles
Temperature range	-15°C / +200°C
Climatical Category	15/200/21 (Aluminium shell)
Humidity (max)	<=95% [at 60 deg C /140 F]
Shock Resistance	100 g [6 ms]
Vibration	15 g [10 Hz - 2000 Hz]
Salt Spray Corrosion	max. 48 hr

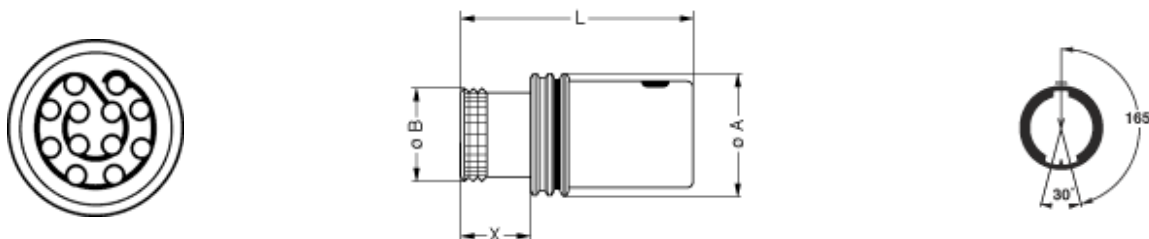
https://www.lemo.com/int_en/solutions/optima/f-rugged-push-pull/phn-2f-312-xlz.html

LEMO products and services are provided "as is". LEMO makes no warranties or representations with regard to LEMO product & services or use of them, express, implied or statutory, including for accuracy, completeness, or security. The user is fully responsible for his products and applications using LEMO components.

Cable fixation

Cable termination protection	For cable bend relief
Fixation type	Cable collet
Jacket cable outside diameter [mm]	5.30 - 14.00 mm

Drawings



Dimensions

	A	L	B	X
mm.	17	26.7	14	8
in.	0.67	1.05	0.55	0.31

Recommended By Lemo

Accessories

Compatible cap

[BRF.2F.200.XAV](#)

https://www.lemo.com/int_en/solutions/optima/f-rugged-push-pull/phn-2f-312-xlz.html

LEMO products and services are provided "as is". LEMO makes no warranties or representations with regard to LEMO product & services or use of them, express, implied or statutory, including for accuracy, completeness, or security. The user is fully responsible for his products and applications using LEMO components.