



## Summary

[Request a quote](#)

[Catalog](#)

Number of contacts Low Voltage	4
Wire Size/AWG	26 - 22
Gender	Standard
Socket / Receptacle	Socket / Receptacle - Fixed Panel Rear Mounted
Locking system	Push-pull
Jacket cable outside diameter [mm]	4.60 - 5.00 mm
Size	0K
Suggested matching part	<a href="#">FGG.0K.304.CYCC50</a>
Series	K - Outdoor keyed

[https://www.lemo.com/int\\_en/solutions/originals/k-outdoor-keyed/peg-0k-304-cymc50d.html](https://www.lemo.com/int_en/solutions/originals/k-outdoor-keyed/peg-0k-304-cymc50d.html)

LEMO products and services are provided "as is". LEMO makes no warranties or representations with regard to LEMO product & services or use of them, express, implied or statutory, including for accuracy, completeness, or security. The user is fully responsible for his products and applications using LEMO components.

# Technical details

## Electrical Configuration

Contact Termination Low voltage	Crimp
R (max)	6.1 mOhm
Insert configuration value	0K.304 - 4 Low Voltage
Insulator	Y: PEEK for crimp contacts
Rated current	7 A
Vtest (contact-contact)	1350 V (AC), 1910 V (DC)
Vtest (contact-shell)	1100 V (AC), 1560 V (DC)
Contact retention	22 N
Contact Type	Crimp
Max. Conductor	0.34 mm <sup>2</sup> (AWG 22)
Min. Conductor	0.14 mm <sup>2</sup> (AWG 26)
Bucket Dia.	0.8 mm (0.031in)
Contact Dia.	0.7 mm (0.028in)
Number of contacts Low Voltage	4
Wire Size/AWG	26 - 22
Gender	Standard

## Form & Material

Shell style / Model id	PE - Fixed receptacle, nut fixing, cable collet (back panel mounting)
Socket / Receptacle	Fixed Panel Rear Mounted
Housing material	Brass (chrome plated [SAE AMS 2460]) shell, collet nut and latch sleeve, nickel plated [SAE AMS QQ N 290] brass mid pieces
Locking system	Push-pull
Keying	1 key (alpha=0, plug: male contacts, receptacle: female contacts)
Variant	Nut for fitting a bend relief, gasket and Viton O-Ring

[https://www.lemo.com/int\\_en/solutions/originals/k-outdoor-keyed/peg-0k-304-cymc50d.html](https://www.lemo.com/int_en/solutions/originals/k-outdoor-keyed/peg-0k-304-cymc50d.html)

LEMO products and services are provided "as is". LEMO makes no warranties or representations with regard to LEMO product & services or use of them, express, implied or statutory, including for accuracy, completeness, or security. The user is fully responsible for his products and applications using LEMO components.

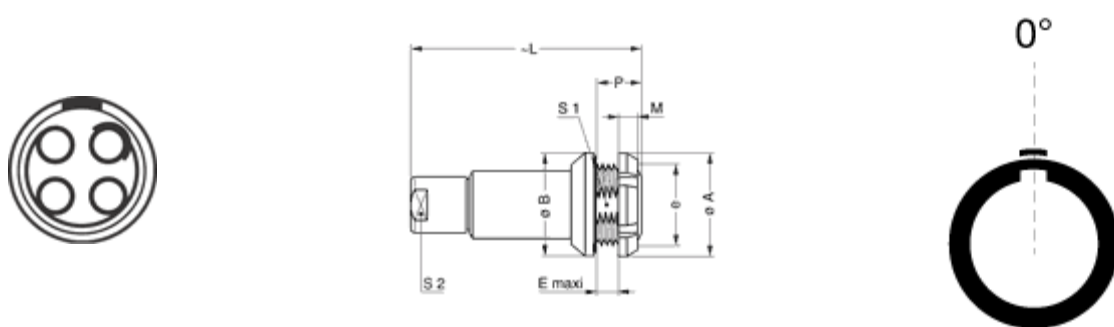
## Environment

Technical domain	Audio Video, Energy and Industrial, Medical, Test and Measurement
Environmental sealing (IP rating)	IP68
Endurance	5000 mating cycles
Temperature range	-55°C / +200°C
Climatical Category	50/175/21
Humidity (max)	<=95% [at 60 deg C /140 F]
Shielding (min)	95 dB (10 MHz)
Shielding (min)	80 dB (1 GHz)
Shock Resistance	100 g [ 6 ms]
Vibration	15 g [10 Hz - 2000 Hz]
Salt Spray Corrosion	>1000 hr

## Cable fixation

Cable termination protection	Standard back nut (no additional protection)
Fixation type	Cable collet
Jacket cable outside diameter [mm]	4.60 - 5.00 mm

## Drawings



## Dimensions

	<b>M</b>	<b>L</b>	<b>E</b>	<b>e</b>	<b>B</b>	<b>A</b>	<b>S1</b>	<b>P</b>	<b>S2</b>
mm.	3.5	34	5	M14x1.0	18	18	12.5	8.5	8
in.	0.14	1.34	0.2		0.71	0.71	0.49	0.33	0.31

[https://www.lemo.com/int\\_en/solutions/originals/k-outdoor-keyed/peg-0k-304-cymc50d.html](https://www.lemo.com/int_en/solutions/originals/k-outdoor-keyed/peg-0k-304-cymc50d.html)

LEMO products and services are provided "as is". LEMO makes no warranties or representations with regard to LEMO product & services or use of them, express, implied or statutory, including for accuracy, completeness, or security. The user is fully responsible for his products and applications using LEMO components.

# Recommended By Lemo

## Accessories

Replacement contact [EGG.0B.655.ZZM](#)

## Tools






Positionner [DCE.91.070.BVM](#)

Extraction tool [DCC.07.04B.LAG](#)

Crimp tool [DPC.91.701.V](#)

Spanner wrench [Socket for torque wrench DCM.0E.M14.4 and DCM.1E.M16.6](#)

# Cables

Cable PartNumber	Material	Colour	Cable image
CMN.04.T22.047QGC	TPR	Grey	
CMN.04.T22.048QGZE	TPR (medical)	Grey	
140240	PVC	Black	
140250	PVC	Grey	
40260	PVC	Black	
4221	PVC	Black	
80080	PVC	Grey	
80082	PVC	Red	
80084	PVC	Black	

[https://www.lemo.com/int\\_en/solutions/originals/k-outdoor-keyed/peg-0k-304-cymc50d.html](https://www.lemo.com/int_en/solutions/originals/k-outdoor-keyed/peg-0k-304-cymc50d.html)

LEMO products and services are provided "as is". LEMO makes no warranties or representations with regard to LEMO product & services or use of them, express, implied or statutory, including for accuracy, completeness, or security. The user is fully responsible for his products and applications using LEMO components.