



Image for illustrative purpose only

## Summary

[Request a quote](#)

[Catalog](#)

Number of contacts Low Voltage	19
Wire Size/AWG	26 - 22
Gender	Reverse Gender
Socket / Receptacle	Socket / Receptacle - Fixed Panel Front Mounted
Locking system	Push-pull
Jacket cable outside diameter [mm]	5.30 - 14.00 mm
Size	2F
Suggested matching part	<a href="#">FGS.2F.319.XLM</a>
Series	F - Rugged Push-Pull

[https://www.lemo.com/int\\_en/solutions/optima/f-rugged-push-pull/pbs-2f-319-xlc.html](https://www.lemo.com/int_en/solutions/optima/f-rugged-push-pull/pbs-2f-319-xlc.html)

LEMO products and services are provided "as is". LEMO makes no warranties or representations with regard to LEMO product & services or use of them, express, implied or statutory, including for accuracy, completeness, or security. The user is fully responsible for his products and applications using LEMO components.

# Technical details

## Electrical Configuration

Number of contacts Low Voltage	19
Contact Termination Low voltage	Crimp
R (max)	6.1 mOhm
Insert configuration value	2F.319 - 19 Low Voltage
Insulator	L: PEEK (UL 94 / V-0/1.5)
Rated current	5 A
Vtest (contact-contact)	1550 V (AC), 2200 V (DC)
Vtest (contact-shell)	1650 V (AC), 2350 V (DC)
Contact retention	22 N
Max. Conductor	0.34 mm <sup>2</sup> (AWG 22)
Min. Conductor	0.14 mm <sup>2</sup> (AWG 26)
Bucket Dia.	0.8 mm (0.031in)
Contact Dia.	0.7 mm (0.028in)
Wire Size/AWG	26 - 22
Gender	Reverse Gender

## Form & Material

Shell style / Model id	PB - Straight receptacle with flange, 2 holes fixing
Socket / Receptacle	Fixed Panel Front Mounted
Housing material	Aluminium (nickel plated [SAE AMS QQ N 290], anthracite color) shell and nut, other pieces bronze/brass
Locking system	Push-pull
Keying	3 keys (beta=155, gamma=50, plug: female contacts, receptacle: male contacts)
Colour	Grey
Weight	5 g

[https://www.lemo.com/int\\_en/solutions/optima/f-rugged-push-pull/pbs-2f-319-xlc.html](https://www.lemo.com/int_en/solutions/optima/f-rugged-push-pull/pbs-2f-319-xlc.html)

LEMO products and services are provided "as is". LEMO makes no warranties or representations with regard to LEMO product & services or use of them, express, implied or statutory, including for accuracy, completeness, or security. The user is fully responsible for his products and applications using LEMO components.

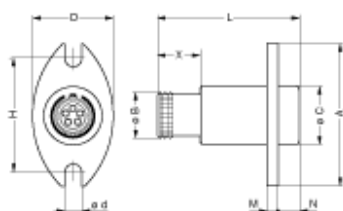
## Environment

Technical domain	Motorsport, Security and Defence
Environmental sealing (IP rating)	IP67
Endurance	1000 mating cycles
Temperature range	-15°C / +200°C
Climatical Category	15/200/21 (Aluminium shell)
Humidity (max)	<=95% [at 60 deg C /140 F]
Shock Resistance	100 g [ 6 ms]
Vibration	15 g [10 Hz - 2000 Hz]
Salt Spray Corrosion	max. 48 hr

## Cable fixation

Cable termination protection	Heatshrink
Fixation type	Heatshrink
Jacket cable outside diameter [mm]	5.30 - 14.00 mm

## Drawings



## Dimensions

	D	B	C	d	A	H	L	M	N	X
mm.	18	14	16	3.2	31	25.9	26.7	2	4	8
in.	0.71	0.55	0.63	0.13	1.22	1.02	1.05	0.08	0.16	0.31

## Recommended By Lemo

### Accessories

Replacement contact	<a href="#">FGG.0B.555.ZZC</a>
---------------------	--------------------------------

[https://www.lemo.com/int\\_en/solutions/optima/f-rugged-push-pull/pbs-2f-319-xlc.html](https://www.lemo.com/int_en/solutions/optima/f-rugged-push-pull/pbs-2f-319-xlc.html)

LEMO products and services are provided "as is". LEMO makes no warranties or representations with regard to LEMO product & services or use of them, express, implied or statutory, including for accuracy, completeness, or security. The user is fully responsible for his products and applications using LEMO components.

## Tools

Positionner	<a href="#">DCE.91.070.BVC</a>
Extraction tool	<a href="#">DCF.93.070.4LT</a>
Crimp tool	<a href="#">DPC.91.701.V</a>

## Cables

Cable PartNumber	Material	Colour	Cable image
CMN.19.T22.079QGZE	TPR (medical)	Grey	

[https://www.lemo.com/int\\_en/solutions/optima/f-rugged-push-pull/pbs-2f-319-xlc.html](https://www.lemo.com/int_en/solutions/optima/f-rugged-push-pull/pbs-2f-319-xlc.html)

LEMO products and services are provided "as is". LEMO makes no warranties or representations with regard to LEMO product & services or use of them, express, implied or statutory, including for accuracy, completeness, or security. The user is fully responsible for his products and applications using LEMO components.