



## Summary

[Request a quote](#)

[Catalog](#)

Number of contacts Low Voltage	6
Wire Size/AWG	32 - 24
Gender	Standard
Plug	Plug - Straight
Locking system	Push-pull
Size	1P
Matching parts	<a href="#">PLG.M0.6GL.LG</a>
Series	REDEL P - Push-Pull

## Technical details

[https://www.lemo.com/int\\_en/solutions/redel/redel-p-push-pull/pag-m0-6gl-azzzg.html](https://www.lemo.com/int_en/solutions/redel/redel-p-push-pull/pag-m0-6gl-azzzg.html)

LEMO products and services are provided "as is". LEMO makes no warranties or representations with regard to LEMO product & services or use of them, express, implied or statutory, including for accuracy, completeness, or security. The user is fully responsible for his products and applications using LEMO components.

## Electrical Configuration

Contact Termination Low voltage	Solder
R (max)	6.5 mOhm
Insert configuration value	1P.M06 - 6 Low Voltage
Insulator	L: PEEK (UL 94 / V-0/1.5)
Rated current	6 Amps
Test voltage (kV rms) Contact-contact	1.05
Contact Type	Solder
Max. Solid Conductor	0.14 mm <sup>2</sup> (AWG 26)
Max. Stranded Conductor	0.14 mm <sup>2</sup> (AWG 26)
Air clearance	0.85 mm
Creepage distance	0.85 mm
Bucket Dia.	0.6 mm (0.024in)
Contact Dia.	0.7 mm (0.0275in)
Number of contacts Low Voltage	6
Wire Size/AWG	32 - 24
Gender	Standard

## Form & Material

Shell style / Model id	PA - Straight plug with cable collet
Plug	Straight
Housing material	PSU (Polysulfone), gray
Locking system	Push-pull
Keying	1 key (alpha=0, Plug: male contact, Receptacle: female contact)
Variant	Gray collet nut
Weight	4.43 g

[https://www.lemo.com/int\\_en/solutions/redel/redel-p-push-pull/pag-m0-6gl-azzzg.html](https://www.lemo.com/int_en/solutions/redel/redel-p-push-pull/pag-m0-6gl-azzzg.html)

LEMO products and services are provided "as is". LEMO makes no warranties or representations with regard to LEMO product & services or use of them, express, implied or statutory, including for accuracy, completeness, or security. The user is fully responsible for his products and applications using LEMO components.

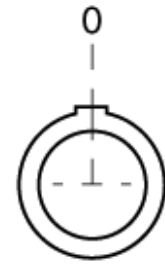
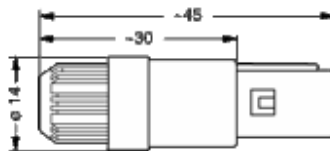
## Environment

Technical domain	Energy and Industrial, Medical, Test and Measurement, Transportation, Aerospace and UAV
Environmental protection (IP rating)	IP50
Minimal temperature	-50°C / +150°C
F ret (max)	150 N
F ret (min)	50 N
Steam sterilization	> 100 times (with potting on rear connection)

## Cable fixation

Cable termination protection	Standard back nut (no additional protection)
Fixation type	Cable collet

## Drawings



[https://www.lemo.com/int\\_en/solutions/redel/redel-p-push-pull/pag-m0-6gl-azzzg.html](https://www.lemo.com/int_en/solutions/redel/redel-p-push-pull/pag-m0-6gl-azzzg.html)

LEMO products and services are provided "as is". LEMO makes no warranties or representations with regard to LEMO product & services or use of them, express, implied or statutory, including for accuracy, completeness, or security. The user is fully responsible for his products and applications using LEMO components.