



Image for illustrative purpose only

Summary

[Request a quote](#)

[Catalog](#)

Size	2E
Series	E - Outdoor Stepped Insert

https://www.lemo.com/int_en/solutions/originals/e-outdoor-stepped-insert/gea-2e-240-ln.html

LEMO products and services are provided "as is". LEMO makes no warranties or representations with regard to LEMO product & services or use of them, express, implied or statutory, including for accuracy, completeness, or security. The user is fully responsible for his products and applications using LEMO components.

Technical details

Electrical Configuration

Insulator	N: PBT (discontinued)
-----------	-----------------------

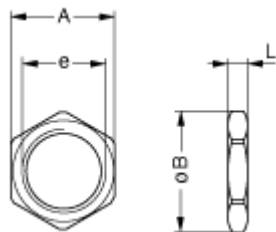
Form & Material

Shell style / Model id	GEA - Hexagonal nuts
Housing material	Aluminum alloy (anodized) shell and collet nut, nickel plated [SAE AMS QQ N 290] brass latch sleeve and mid pieces
Keying	No keying
Weight	6.29 g

Environment

Technical domain	Energy and Industrial, Test and Measurement
Environmental sealing (IP rating)	No IP rating
Temperature range	-55°C / +200°C (max. temperature valid for short periods of use.)
Climatical Category	50/175/21
Humidity (max)	<=95% [at 60 deg C /140 F]
Shielding (min)	95 dB (10 MHz)
Shielding (min)	80 dB (1 GHz)
Shock Resistance	100 g [6 ms]
Vibration	15 g [10 Hz - 2000 Hz]

Drawings



No keying

Dimensions

	A	B	e	L
mm.	24	27	M20x1.0	4
in.	0.94	1.06		0.16

https://www.lemo.com/int_en/solutions/originals/e-outdoor-stepped-insert/gea-2e-240-ln.html

LEMO products and services are provided "as is". LEMO makes no warranties or representations with regard to LEMO product & services or use of them, express, implied or statutory, including for accuracy, completeness, or security. The user is fully responsible for his products and applications using LEMO components.