



## Summary

[Request a quote](#)

[Catalog](#)

Size	1E
Series	E - Outdoor Stepped Insert

## Technical details

### Form & Material

Shell style / Model id	GCA - Earthing washer
Housing material	Brass (CuSnZn plated)
Keying	No keying
Weight	0.65 g

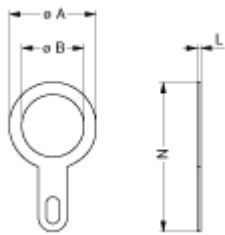
### Environment

Technical domain	Energy and Industrial, Test and Measurement
Environmental protection (IP rating)	No IP rating
Minimal temperature	-55°C / +200°C
Climatical Category	50/175/21
Humidity (max)	<=95% [at 60 deg C /140 F]
Shielding (min)	95 dB (10 MHz)
Shielding (min)	80 dB (1 GHz)
Shock Resistance	100 g [ 6 ms]
Vibration	15 g [10 Hz - 2000 Hz]

[https://www.lemo.com/int\\_en/solutions/originals/e-outdoor-stepped-insert/gca-1e-255-lt.html](https://www.lemo.com/int_en/solutions/originals/e-outdoor-stepped-insert/gca-1e-255-lt.html)

LEMO products and services are provided "as is". LEMO makes no warranties or representations with regard to LEMO product & services or use of them, express, implied or statutory, including for accuracy, completeness, or security. The user is fully responsible for his products and applications using LEMO components.

# Drawings



No keying

## Dimensions

	<b>A</b>	<b>B</b>	<b>L</b>	<b>N</b>
mm.	20	16.2	0.5	32
in.	0.79	0.64	0.02	1.26

[https://www.lemo.com/int\\_en/solutions/originals/e-outdoor-stepped-insert/gca-1e-255-lt.html](https://www.lemo.com/int_en/solutions/originals/e-outdoor-stepped-insert/gca-1e-255-lt.html)

LEMO products and services are provided "as is". LEMO makes no warranties or representations with regard to LEMO product & services or use of them, express, implied or statutory, including for accuracy, completeness, or security. The user is fully responsible for his products and applications using LEMO components.