



*Image for illustrative purpose only*

## Summary

[Request a quote](#)

---

[Catalog](#)

---

Nb of contacts Coax	1
Size	2S
Series	S - Indoor Stepped Insert

[https://www.lemo.com/int\\_en/solutions/originals/s-indoor-stepped-insert/gba-2s-250-fn.html](https://www.lemo.com/int_en/solutions/originals/s-indoor-stepped-insert/gba-2s-250-fn.html)

LEMO products and services are provided "as is". LEMO makes no warranties or representations with regard to LEMO product & services or use of them, express, implied or statutory, including for accuracy, completeness, or security. The user is fully responsible for his products and applications using LEMO components.

# Technical details

## Electrical Configuration

Nb of contacts Coax	1
Rated current	15 A
OHM	50
Cable type	RG 58 C/U, RG 302 /U, RG 400 /U, 2YCCY, RG 59 B/U, RG 223 /U, HF-5408

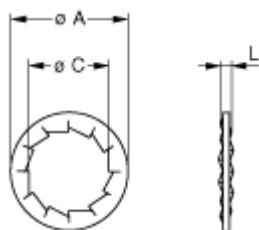
## Form & Material

Shell style / Model id	GBA - Locking washer
Housing material	Bronze (nickel plated [SAE AMS QQ N 290]) washer
Keying	No keying
Weight	0.24 g

## Environment

Technical domain	Audio Video, Energy and Industrial, Semiconductor, Test and Measurement
Environmental sealing (IP rating)	No IP rating
Temperature range	-55°C / +250°C
Climatical Category	50/175/21
Humidity (max)	<=95% [at 60 deg C /140 F]
Shielding (min)	75 dB (10 MHz)
Shielding (min)	40 dB (1 GHz)
Shock Resistance	100 g [ 6 ms]
Vibration	15 g [10 Hz - 2000 Hz]

## Drawings



**No keying**

[https://www.lemo.com/int\\_en/solutions/originals/s-indoor-stepped-insert/gba-2s-250-fn.html](https://www.lemo.com/int_en/solutions/originals/s-indoor-stepped-insert/gba-2s-250-fn.html)

LEMO products and services are provided "as is". LEMO makes no warranties or representations with regard to LEMO product & services or use of them, express, implied or statutory, including for accuracy, completeness, or security. The user is fully responsible for his products and applications using LEMO components.

## Dimensions

	<b>A</b>	<b>C</b>	<b>L</b>
mm.	19.5	15.1	1.2
in.	0.77	0.59	0.05

[https://www.lemo.com/int\\_en/solutions/originals/s-indoor-stepped-insert/gba-2s-250-fn.html](https://www.lemo.com/int_en/solutions/originals/s-indoor-stepped-insert/gba-2s-250-fn.html)

LEMO products and services are provided "as is". LEMO makes no warranties or representations with regard to LEMO product & services or use of them, express, implied or statutory, including for accuracy, completeness, or security. The user is fully responsible for his products and applications using LEMO components.