



*Image for illustrative purpose only*

## Summary

[Request a quote](#)

---

[Catalog](#)

---

Nb of contacts Coax	1
Size	1S
Series	S - Indoor Stepped Insert

[https://www.lemo.com/int\\_en/solutions/originals/s-indoor-stepped-insert/gba-1s-250-fn.html](https://www.lemo.com/int_en/solutions/originals/s-indoor-stepped-insert/gba-1s-250-fn.html)

LEMO products and services are provided "as is". LEMO makes no warranties or representations with regard to LEMO product & services or use of them, express, implied or statutory, including for accuracy, completeness, or security. The user is fully responsible for his products and applications using LEMO components.

# Technical details

## Electrical Configuration

Nb of contacts Coax	1
Rated current	12 A
OHM	50
Cable type	RG 178 B/U, RG 196 A/U, RG 188 A/U, RG 316 B/U, RG 174 A/U, HF-2114, RG 122 /U

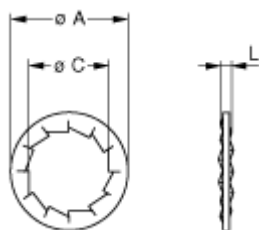
## Form & Material

Shell style / Model id	GBA - Locking washer
Housing material	Bronze (nickel plated [SAE AMS QQ N 290]) washer
Keying	No keying
Weight	0.45 g

## Environment

Technical domain	Audio Video, Energy and Industrial, Semiconductor, Test and Measurement
Environmental sealing (IP rating)	No IP rating
Temperature range	-55°C / +250°C
Climatical Category	50/175/21
Humidity (max)	<=95% [at 60 deg C /140 F]
Shielding (min)	75 dB (10 MHz)
Shielding (min)	40 dB (1 GHz)
Shock Resistance	100 g [ 6 ms]
Vibration	15 g [10 Hz - 2000 Hz]

## Drawings



**No keying**

[https://www.lemo.com/int\\_en/solutions/originals/s-indoor-stepped-insert/gba-1s-250-fn.html](https://www.lemo.com/int_en/solutions/originals/s-indoor-stepped-insert/gba-1s-250-fn.html)

LEMO products and services are provided "as is". LEMO makes no warranties or representations with regard to LEMO product & services or use of them, express, implied or statutory, including for accuracy, completeness, or security. The user is fully responsible for his products and applications using LEMO components.

## Dimensions

	<b>A</b>	<b>C</b>	<b>L</b>
mm.	16	12.1	1
in.	0.63	0.48	0.04

[https://www.lemo.com/int\\_en/solutions/originals/s-indoor-stepped-insert/gba-1s-250-fn.html](https://www.lemo.com/int_en/solutions/originals/s-indoor-stepped-insert/gba-1s-250-fn.html)

LEMO products and services are provided "as is". LEMO makes no warranties or representations with regard to LEMO product & services or use of them, express, implied or statutory, including for accuracy, completeness, or security. The user is fully responsible for his products and applications using LEMO components.