



Image for illustrative purpose only

Summary

| | |
|---------------------------------|-----------------------------|
| Request a quote | |
| Catalog | |
| Number of contacts Low Voltage | 7 |
| Wire Size/AWG | 24 - 16 |
| Locking system | Push-pull |
| Size | 3N |
| Series | N - Nuclear Stainless Steel |

Technical details

Electrical Configuration

| | |
|---------------------------------|---------------------------|
| Number of contacts Low Voltage | 7 |
| Contact Termination Low voltage | Solder |
| Insert configuration value | 3N.307 - 7 Low Voltage |
| Insulator | L: PEEK (UL 94 / V-0/1.5) |
| Rated current | 15 A |
| Contact Dia. | 1.6 mm (0.06in) |
| Wire Size/AWG | 24 - 16 |

Form & Material

| | |
|------------------------|---|
| Shell style / Model id | ASG - Fixed adapter to K/N series plug, vacuum tight, nut fixing |
| Housing material | Stainless steel shell, collet nut and latch sleeve, nickel plated [SAE AMS QQ N 290] brass mid pieces |
| Locking system | Push-pull |
| Keying | Push-Pull latch for manipulator. Male contacts |
| Colour | Grey |
| Variant | Watertight / Vacuum-tested unmated (connector to device) |
| Weight | 221.64 g |

Environment

| | |
|-----------------------------------|--|
| Technical domain | Energy and Industrial, Specialties and Other |
| Environmental sealing (IP rating) | Hermetic unmated |
| Endurance | >1000 mating cycles |
| R leak (He) (max) | 0.0000001 mbar*l/s (if vacuum-tested) |

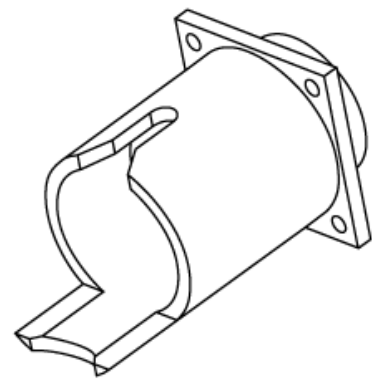
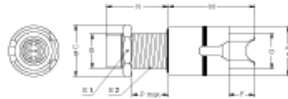
Cable fixation

| | |
|------------------------------|--|
| Cable termination protection | Standard back nut (no additional protection) |
|------------------------------|--|

Drawings

https://www.lemo.com/int_en/solutions/supreme/n-nuclear-stainless-steel/asg-3n-307-tlapv.html

LEMO products and services are provided "as is". LEMO makes no warranties or representations with regard to LEMO product & services or use of them, express, implied or statutory, including for accuracy, completeness, or security. The user is fully responsible for his products and applications using LEMO components.



Dimensions

| | A | B | C | F | G | M | N | P | S1 | S2 |
|-----|------|---------|------|------|------|------|------|------|------|------|
| mm. | 32 | M24x1.0 | 34 | 18.5 | 19 | 56.5 | 54.0 | 37 | 30 | 22.5 |
| in. | 1.26 | | 1.34 | 0.73 | 0.75 | 2.22 | 2.13 | 1.46 | 1.18 | 0.89 |