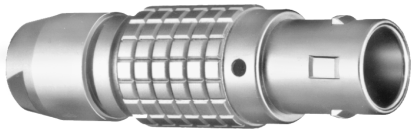


# REFERENCE GUIDE

## LEMO's TORQUE GUIDE FOR METAL PLUGS ●

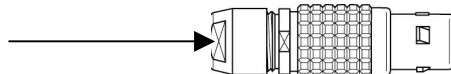


**LEMO**®

**INTRODUCTION**

This guides describes specifications by which LEMO rear collet nuts and cap nuts are to be torqued in order to ensure proper assembly, and avoid damage. For additional assistance, please contact LEMO.

**TORQUE SPECIFICATIONS FOR REAR COLLET NUT**



**S Series**

Series	00	0S	1D	1S	2C	2S	3S	4S	5S	6S
Torque (Nm)	0.25	0.5	1.5	1.5	2.5	2.5	6	8	10	12
Torque (In-lbs)	2.2	4.4	13	13	22	22	53	70	88	106

**B Series**

Series	00	0B	1B	2B	2G	3B	4B	5B
Torque (Nm)	0.25	0.5	1.5	2.5	2.5	4	7	10
Torque (In-lbs)	2.2	4.4	13	22	22	35	62	88

**E Series**

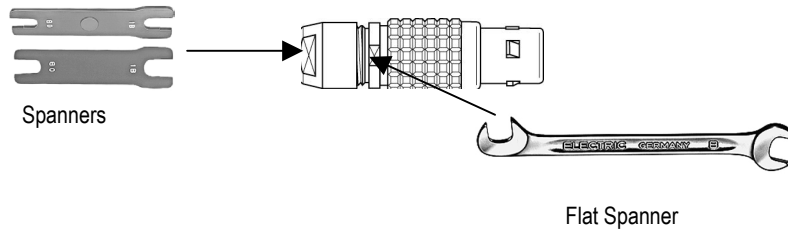
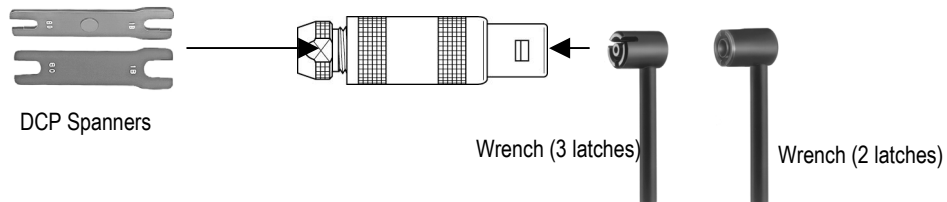
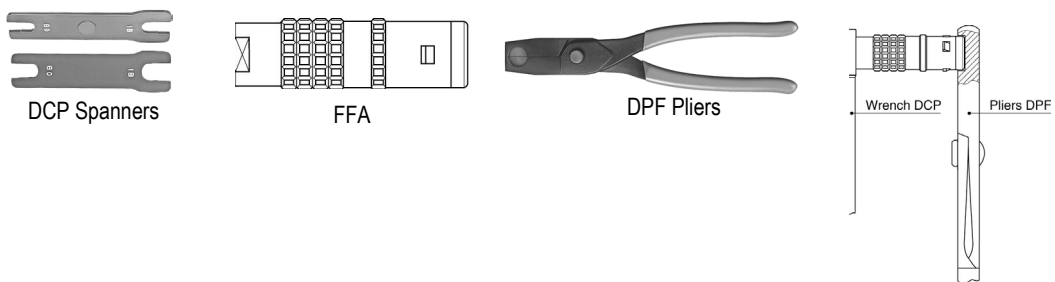
Series	0E	1E	2E	3E	4E	5E	6E
Torque (Nm)	0.7	0.8	2	3	5	8	12
Torque (In-lbs)	6	7	17	26	44	70	106

**K Series**

Series	0K	1K	2K	3K	4K	5K
Torque (Nm)	0.7	0.8	2	3	5	8
Torque (In-lbs)	6	7	17	26	44	70

**TORQUE APPLICATION**

In each case the goal is to hold the connector in the correct location for tightening and not to damage internal parts when applying torque to the connector.

**B-Series**

**S-Series**

**E-Series**

**K-Series**

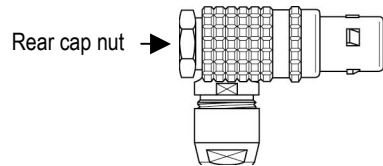
**CALIBRATED BREAK-OVER WRENCHES ARE AVAILABLE**

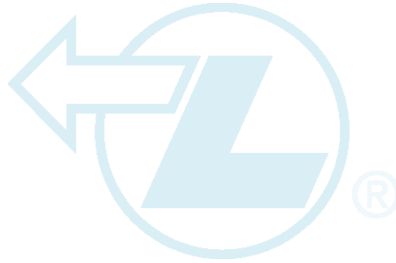
Part Number	Torque Setting (In-Lbs)	Wrench Size (mm)
MTZ.00.022.045	2.25	4.5
MTZ.0S.045.065	4.5	6.5
MTZ.1S.132.085	13.25	8.5
MTZ.2S.220.011	22	11
MTZ.00.022.050	2.25	5
MTZ.00.022.060	2.25	6
MTZ.0B.045.070	4.5	7
MTZ.0B.045.080	4.5	8
MTZ.1B.132.090	13.25	9
MTZ.2B.265.120	26.5	12
MTZ.3B.355.140	35.5	14
MTZ.3B.355.150	35.5	15
MTZ.0E.062.070	6.25	7
MTZ.0E.062.080	6.25	8
MTZ.1E.070.090	7	9
MTZ.2E.175.120	17.5	12
MTZ.3E.265.150	26.5	15
MTZ.4E.442.190	44.25	19



**ELBOW PLUGS, REAR CAP NUT TORQUE**

Series	00	0B	0K	1B	1K	2B	2K	3B	3K	4B	4K	5B	5K
			0E		1E		2E		3E		4E		5E
Torque (Nm)	0.3	0.6	0.8	1	1	1	1.2	1.5	1.5	3	3	5	5
Torque (In-lbs)	2.6	5.3	7	8.8	8.8	8.8	10	13	13	26	26	44	44





635 Park Court, Rohnert Park, CA 94928  
P.O. Box 2408, Rohnert Park, CA 94928-2408  
(800) 444-5366 • (707) 578-8811 • fax (707) 578-0869

[www.LemoUSA.com](http://www.LemoUSA.com) • email: [info@lemousa.com](mailto:info@lemousa.com)

---

Notice: The information contained in this document is subject to change without notice. LEMO makes no warranty of any kind with regard to this material, including, but not limited to, the implied warranties of merchantability and fitness for a particular purpose. LEMO shall not be liable for errors contained herein or for incidental or consequential damages in connection with the furnishing, performance or use of this material.

Reproduction, adaptation or translation of this document is prohibited without prior written permission of LEMO.

All brand and product names are trademarks or registered trademarks of their respective companies.

© 2003 LEMO USA, inc. All rights reserved. LEMO is a registered trademark of INTERLEMO HOLDING SA