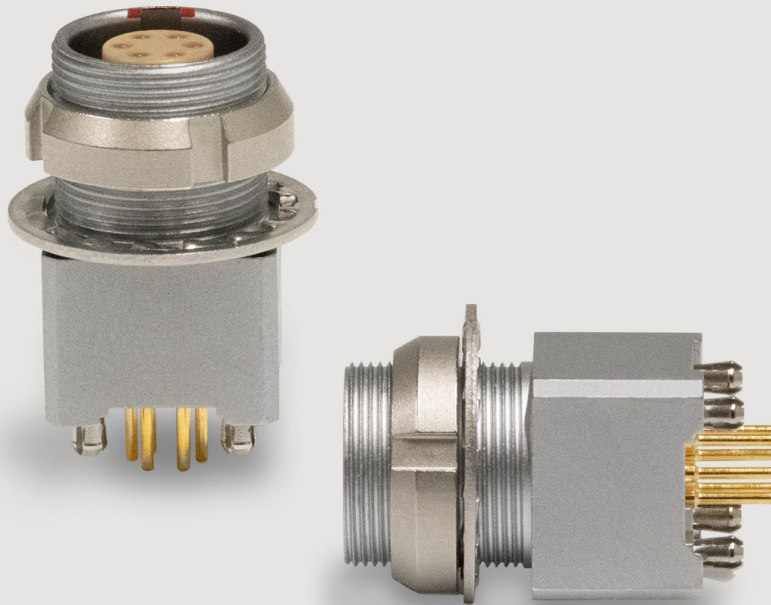


PRESS FIT CONTACTS FOR ELBOW AND STRAIGHT PCB SOCKETS



Harpoon earthing pins

LEMO connector is well known for its Push-Pull connector. LEMO's new harpoon earthing pins enable pre-installing easily various receptacles/socket.

The advantage of these new press-fit contacts is the gain of time while doing the pre-assembly, no need to place the washers and screw 4 times the M1.6 screws.

Simply align the connector and push firmly.

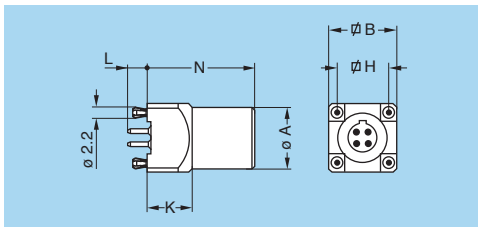
This pre-assembly will enable the assembly house or final customer to turn the PCB board upside down and run the parts through the reflow soldering oven.

This solution is planned for elbow and straight PCB sockets of 0B & 1B series. The current design works specifically with 1.6 mm thickness boards.



Model

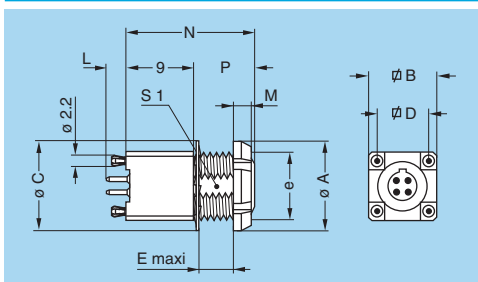
EZG Straight socket for printed circuit, key (G) or keys (A...F)



Reference		Dimensions (mm)				
Model	Series	A	B	H	K	N
EZG	0B	9	10	7.62	8	15
EZG	1B	11	12	7.62	8	19

Note: Length «L» depends on the number of contacts, see unipole-multipole catalogue. Add letter «B» at the end of the reference to order with integrated harpoon pins (1.6 mm PCB thickness).

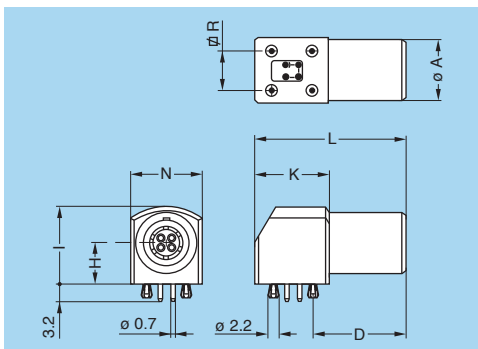
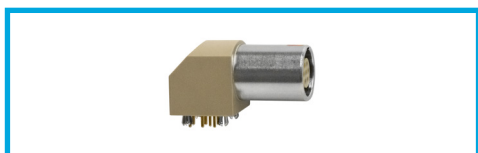
EYG Fixed socket for printed circuit, nut fixing, key (G) or keys (A...F) (back panel mounting)



Reference		Dimensions (mm)									
Model	Series	A	B	C	D	e	M	N	P	S1	
EYG	0B	12	10	12.5	7.62	M9x0.6	2.6	2.5	15	6	8.2
EYG	1B	14	12	16.0	7.62	M11x0.5	5.0	3.5	19	10	-

Note: Length «L» depends on the number of contacts, see unipole-multipole catalogue. Add letter «B» at the end of the reference to order with integrated harpoon pins (1.6 mm PCB thickness).

EPG Elbow (90°) socket for printed circuit, key (G) or keys (A...F)



Reference		Dimensions (mm)							
Model	Series	A	D	H	I	K	L	N	R
EPG	0B	9	14.6	6.7	12.6	13.3	25	11.7	7.62
EPG	1B	11	16.6	7.5	14.0	13.3	27	12.6	7.62

Note: Add letter «B» at the end of the reference to order with integrated harpoon pins (1.6 mm PCB thickness).

LEMO HEADQUARTERS

SWITZERLAND
LEMO SA
Chemin des Champs-Courbes 28 - P.O. Box 194 - CH-1024 Ecublens
Tel. (+41 21) 695 16 00 - Fax (+41 21) 695 16 02 - e-mail: info@lemo.com

www.lemo.com