



Summary

[Request a quote](#)

[Catalog](#)

Coax	1
Socket / Receptacle	Socket / Receptacle - Fixed Panel Rear Mounted
Locking system	Push-pull
Series	00 - NIM-CAMAC

Technical details

Electrical Configuration

Coax	1
R (max)	6.1 mOhm
Insert configuration value	0.25 - 1 Coax (50 Ohm)
Insulator	T: PTFE
Rated current	4 Amps
Impedance	50 Ohm
VSWR	$1.09 + 0.11 * f/\text{GHz}$
Vtest	2100 V (AC), 3000 V (DC)
Contact Type	Coaxial 50 Ohm (Printed Circuit Board)
Test voltage	2.1 kV (rms)
Contact Dia.	0.7 mm (0.028in)

https://www.lemo.com/int_en/solutions/specialties/00-nim-camac/hep-00-250-ntnp.html

LEMO products and services are provided "as is". LEMO makes no warranties or representations with regard to LEMO product & services or use of them, express, implied or statutory, including for accuracy, completeness, or security. The user is fully responsible for his products and applications using LEMO components.

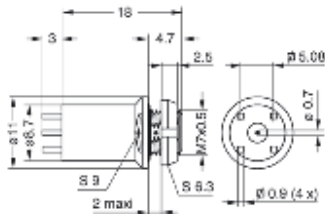
Form & Material

Shell style / Model id	HEP - Fixed receptacle, nut fixing, watertight for printed circuit
Socket / Receptacle	Fixed Panel Rear Mounted
Housing material	Brass (nickel plated [SAE AMS QQ N 290]) shell, collet nut, latch sleeve and mid pieces
Locking system	Push-pull
Keying	Circular, female
Variant	Watertight unmated (connector to device)
Weight	7.39 g

Environment

Environmental protection (IP rating)	IP50
Minimal temperature	-20°C / +100°C
F ret (min)	100 N
Pressure	60 bars
Salt Spray Corrosion	>144 hr

Drawings



Dimensions

	L	A	e	E_{max}
mm.	18	11	M7x0.5	2
in.	0.71	0.43		0.08

https://www.lemo.com/int_en/solutions/specialties/00-nim-camac/hep-00-250-ntnp.html

LEMO products and services are provided "as is". LEMO makes no warranties or representations with regard to LEMO product & services or use of them, express, implied or statutory, including for accuracy, completeness, or security. The user is fully responsible for his products and applications using LEMO components.